



La Mieux.

High Performance Hot-melt Moulding

LM2500



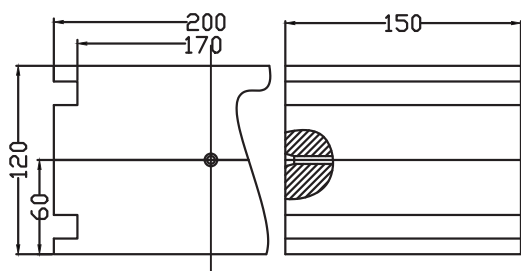
Machine Description

- Table-style LPM injection machine, assembled with world-famous automation parts for precision operation in order to build excellent quality and durable machine.
- 3-Liters melting system with durable gear pump in order to maintain stable flow per shot, and reach the continuous production.
- Independent and stable three position temperature control system (tank, hose, plastic guns), to ensure the stable operation of the temperature parameters are correct.
- Melting system is changeable to LM2000S extruder system in order to control material and better injection performance.
- Timing automatic heating devices, for on-site personnel work operation on specific time. Module design for entire parts, for easy error identification and repairment.
- Machine with safety design to prevent over heat and error operation automatically.
- Work safety protection using two-hands switch and optical curtain protection, and collocation emergency stop to prevent any sudden situation.
- Standardized mold design, for easy engineer development and tooling setting by operator.

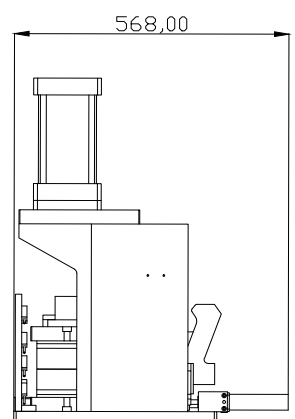
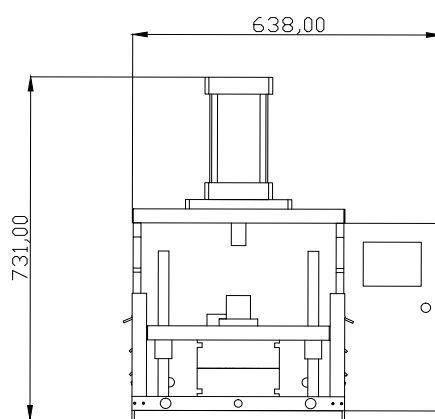
Technical Data

Items	Specification
Tank Capacity	3 Liter
Max. Melting Rate	4 Kg/HR
Max. Operation Temp.	250 °C
Max. Closing Force	700 Kg
Air Pressure	5~6 Kg/cm ²
Max. Viscosity	20,000 CPS
Hose Number	1 Set
Size(L*W*H)	568*638*731 mm
Weight	150 Kg
Power	1600 Watt
Power Requirements	AC 220V/7A 50/60Hz 1.5 Φ

Mold Size



Machine Size



Taipei

4F-4, No.79, Sec1 Hsin Tai Wu Road,
Hsi-Chih Dist., New Taipei City, Taiwan; Zip code: 22101
TEL: +886-2-2698-1766
FAX: +886-2-2698-1755
e-mail: lamieux@ms45.hinet.net