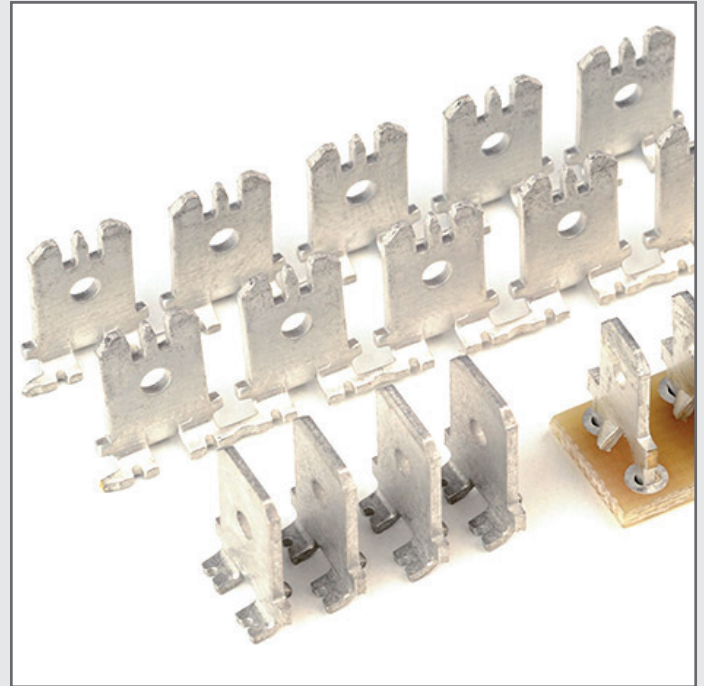


SMT Tabs



Features and Benefits

- Zierick Tabs / Quick Disconnects have high retention forces.
- The shoulder provides a stand-off for the mating part from the PCB
- They retain typical through-hole Tab / Quick Disconnect features.
- They don't float during reflow.
- All are designed for automation using the customer's existing pick and place equipment and a special feeder, and require no time consuming hand placement or costly fixturing.
- Most Tabs can be automated using standard tape feeders.



Produkt Discription

The family of Surface Mount Tabs / Quick Disconnects is now easier than ever to use.

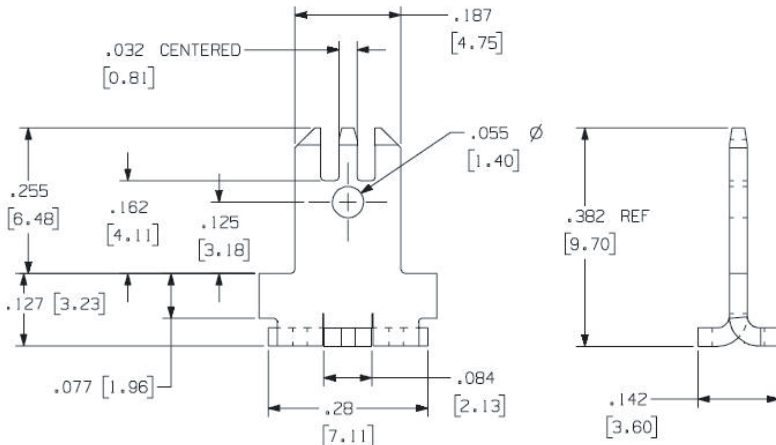
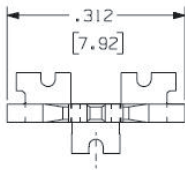
They are supplied on reels for easy application by our Surf-Shooter SMT™ Continuous Strip Feeders, in loose piece for lower volumes, or in Surface Mount Tape Pockets.

Any Tab which is available in Tape can be purchased in Small Reels for prototyping.

Many of our Surface Mount Tabs / Quick Disconnects have been designed for easy "gripper" pick-up from Tape Pockets, and can be placed by the customer's existing placement systems.

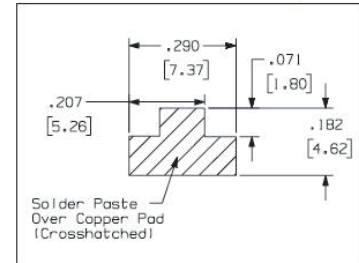
Part Numbers 1278, 6278

Zierick recommends .006" stencil thickness for most applications. For other stencil thicknesses, call Zierick's product development department.



Loose Part No.	1278
Strip	6278
Hole Dimension	0.055" (1.40mm)
Material Thickness / Type	0.032" (0.81mm) Brass
Standard Finish	Loose: 100% Tin over Copper Reeled: 100% Tin over Copper
Current Rating	20 Amperes
Feeder System	Surf-Shooter SMT™ Continuous Strip Feeder

Recommended Solder Pad Geometry

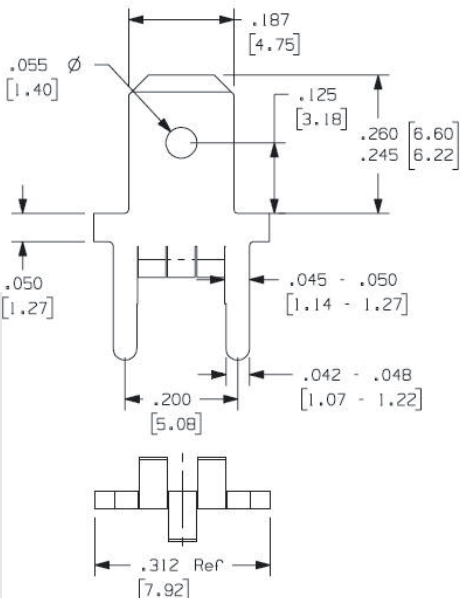


Mating receptacle first withdrawal force may not exceed the UL310 spec. of 18 lbs. max.

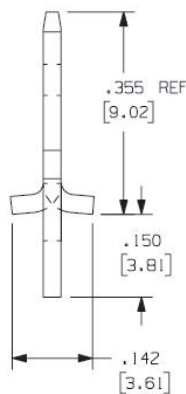
A 2oz. PCB Copper trace recommended.

Part Number 6291

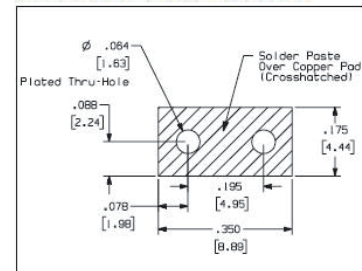
Zierick recommends .006" stencil thickness for most applications. For other stencil thicknesses, call Zierick's product development department.



Loose Part No.	N/A
Reeled	6291
Hole Dimension	0.055" (1.408mm) hole
Material Thickness / Type	0.032" (0.81mm) Brass
Standard Finish	100% Tin over Copper
Current Rating	25 Amperes
Feeder System	Surf-Shooter SMT™ Continuous Strip Feeder Model 9700 Model 9700 XY



Recommended Solder Pad Geometry



LaMieux Products, Ltd.

4F-4, No.79, Sec1
Hsin Tai Wu Road,
Hsi-Chih Dist.,
New Taipei City,
Taiwan

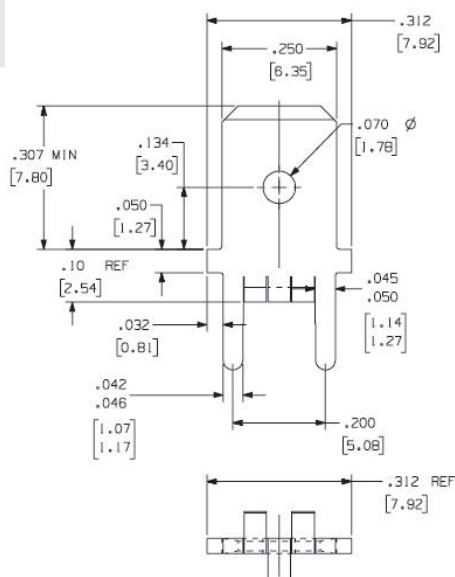
TEL: +886-2-2698-1766
FAX: +886-2-2698-1755

lamieux@ms45.hinet.net
www.lamieux.com.tw



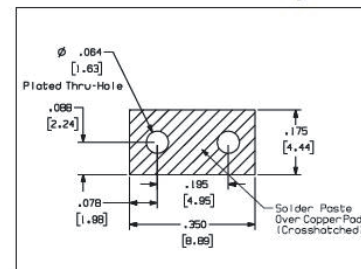
Part Number 6284

Zierick recommends .006" stencil thickness for most applications. For other stencil thicknesses, call Zierick's product development department.



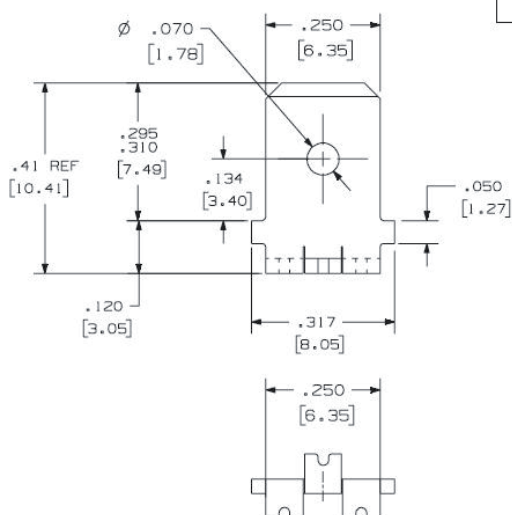
Loose Part No.	N/A
Reeled	6284
Hole Dimension	0.070" (1.78mm) hole
Material Thickness / Type	0.032" (0.81mm) Brass
Standard Finish	100% Tin over Copper
Current Rating	25 Amperes
Feeder System	Surf-Shooter SMT™ Continuous Strip Feeder Model 9700 Model 9700 XY

Recommended Solder Pad Geometry



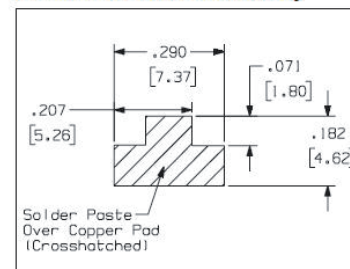
Part Numbers 1285, 6285, 1285TG, 1285TG-SR

Zierick recommends .006" stencil thickness for most applications. For other stencil thicknesses, call Zierick's product development department.



Loose Part No.	1285	
Strip	6285	
Taped	1285TG	1285TG-SR
Hole Dimension	0.070" (1.78mm) hole	
Material Thickness / Type	0.032" (0.81mm) Brass	
Standard Finish	100% Tin over Copper	
Current Rating	25 Amperes	
Feeder System	Surf-Shooter SMT™ Continuous Strip Feeder for PN 6285 Standard 24mm Tape Feeder for PN 1285TG	

Recommended Solder Pad Geometry



Mating receptacle first withdrawal force may not exceed the UL310 spec. of 18 lbs max.

A 2oz. PCB Copper trace recommended.

LaMieux Products, Ltd.

4F-4, No.79, Sec1
Hsin Tai Wu Road,
Hsi-Chih Dist.,
New Taipei City,
Taiwan

TEL: +886-2-2698-1766
FAX: +886-2-2698-1755

lamieux@ms45.hinet.net
www.lamieux.com.tw

