

THR/THD Other



Features and Benefits

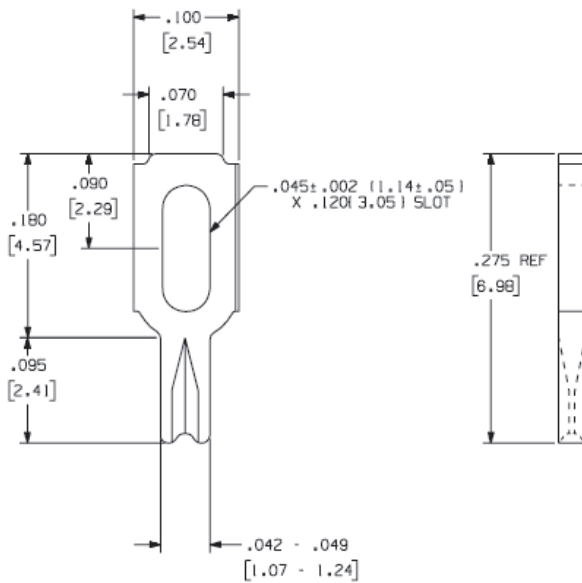
- Zierick's Stable-Lok® and Accu-Lok™ mounting features improve the terminal retention of quick disconnect terminals to the PCB.
- Test point terminals offer exceptional designed-in flexibility allowing test engineers to easily attach test probes.
- They are available with Accu-Lok™ mounting, for maximum PCB retention and solder joint integrity.
- The Accu-Lok™ feature assures mounting repeatability and reduces the occurrence of fractured terminals.
- Press-fit test points are also available.
- PCB retention is achieved through a controlled splitting and forming of the terminal leg during insertion, preventing extreme hole deformation, hole damage or board warpage commonly caused by traditional press-fit terminal designs.



Since the unique design of Accu-Lok™ mounting is not a press fit, it prevents hole damage and deformity.

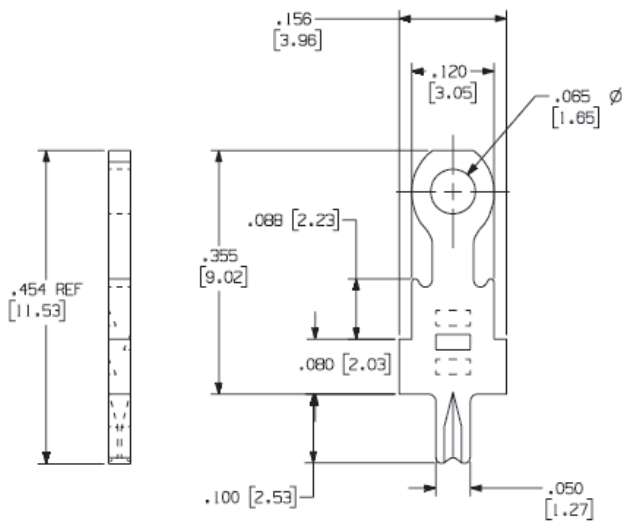
The Accu-Lok™ retentive mounting feature produces exceptional PCB assembly and interconnection integrity. The PCB retention of Accu-Lok™ mounting is accomplished by a controlled splitting and forming of the terminal leg during insertion.





Part Numbers 1069, 6069

Loose Part No.	1069
Reeled Part No.	6069
Mounting Type	Split Leg Splay
Material Thickness / Type	0.025" (0.64mm) Brass
Standard Finish	Loose: 100% Tin over Copper Reeled: 100% Tin over Copper
Mounting Hole Diameter	0.055" ±0.003" (1.40mm ±0.076)
Current Rating	10 Amperes
Applicator System	Loose: ZPT81-TP Reeled: Model 9700, 9700 XY



Part Numbers 1058, 1059, 6059

Loose Part No.	1058	1059
Reeled Part No.		6059
Mounting Type	Split Leg Splay	Split Leg Splay
Material Thickness / Type	0.020" (0.51mm) Brass	0.032" (0.81mm) Brass
Standard Finish	Loose: 100% Tin over Copper Reeled: 100% Tin over Copper	
Mounting Hole Diameter	0.046" ±0.003" (1.17mm ±0.076)	0.052" ±0.003" (1.32mm ±0.076)
Current Rating	10 Amperes	
Applicator System	Loose: ZPT81-TP Reeled: Model 9700, 9700 XY	

LaMieux Products, Ltd.

4F-4, No.79, Sec1
Hsin Tai Wu Road,
Hsi-Chih Dist.,
New Taipei City,
Taiwan

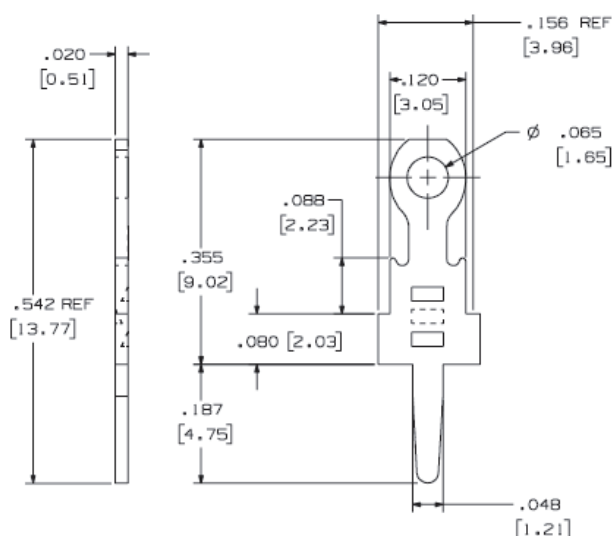
TEL: +886-2-2698-1766
FAX: +886-2-2698-1755

lamieux@ms45.hinet.net
www.lamieux.com.tw

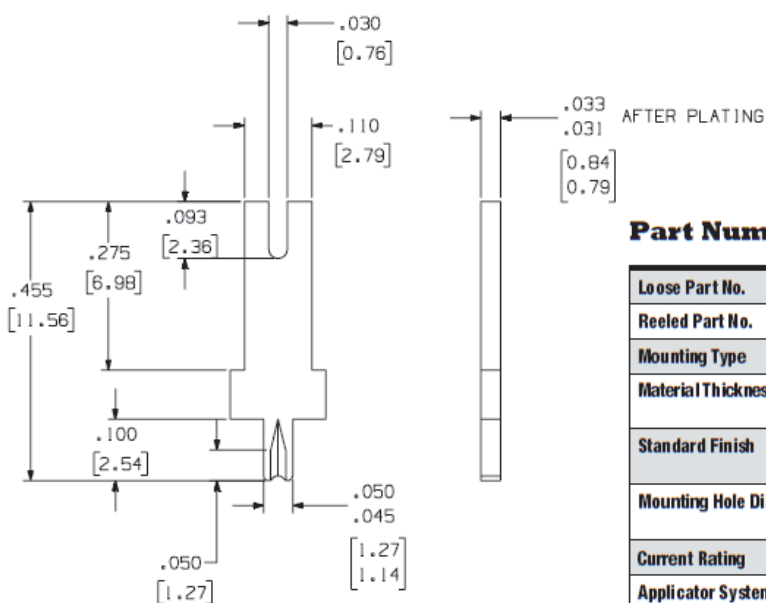


Test Point Terminals

Part Number 1032



Loose Part No.	1032
Mounting Type	Press-Fit
Material Thickness / Type	0.020" (0.51mm) Brass
Standard Finish	Loose: 100% Tin over Copper
Mounting Hole Diameter	0.046" \pm 0.003" (1.17mm \pm 0.076)
Current Rating	10 Amperes
Applicator System	Loose: ZPT81-TP



Part Numbers 6050-030, 1049-030

Loose Part No.	N/A	1049-030
Reeled Part No.	6050-030	N/A
Mounting Type	Split Leg Splay	Split Leg Splay
Material Thickness / Type	0.020" (0.51mm) Brass	0.032" (0.81mm) Brass
Standard Finish	Loose: 100% Tin over Copper Reeled: 100% Tin over Copper	
Mounting Hole Diameter	0.050" \pm 0.003" (1.27mm \pm 0.076)	0.054" \pm 0.003" (1.37mm \pm 0.076)
Current Rating	10 Amperes	
Applicator System	Loose: ZPT81-TP Reeled: Model 9700, 9700 XY	

LaMieux Products, Ltd.

4F-4, No.79, Sec1
Hsin Tai Wu Road,
Hsi-Chih Dist.,
New Taipei City,
Taiwan

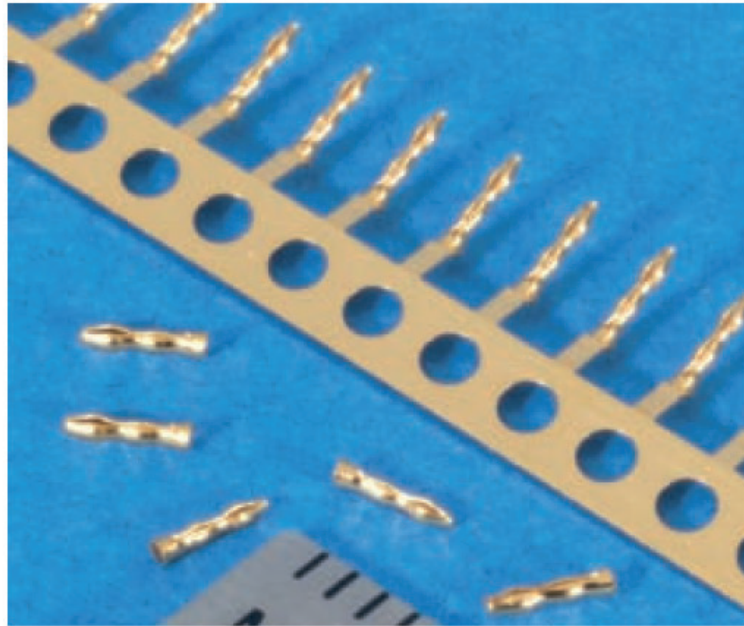
TEL: +886-2-2698-1766
FAX: +886-2-2698-1755

lamieux@ms45.hinet.net
www.lamieux.com.tw

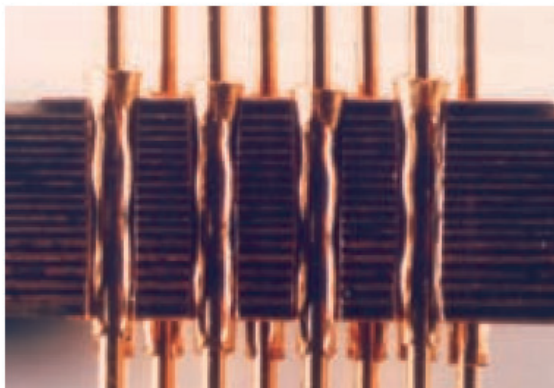


Features and Benefits

- This connector enables the creation of a three-dimensional circuit by connecting stacked multi-layer circuit boards.
- It is a solderless interconnection system which utilizes pins and internal sockets.
- The system allows a staggered row grid density of 0.50" and a minimum PCB-to-PCB interface of 0.062".
- It accommodates boards with through-holes varying from 0.020" to 0.025" in diameter.
- Continuous format Pro-Wave sockets permit placement by automatic equipment in any number of pin counts on both standard and special grid spacings.

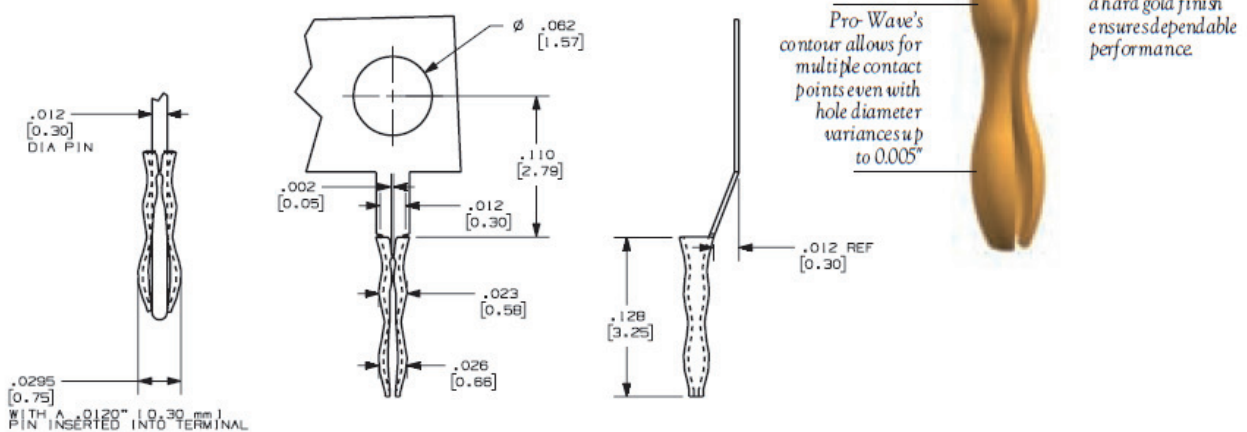


The uniquely shaped Pro-Wave socket fulfills parallel PCB stacking needs in a high-speed matched impedance environment.



Part Number 608213-22

Loose Part No.	608213-22
Material Thickness / Type	0.0035" (0.09mm) Beryllium Copper
Standard Finish	Hard Gold
Mating Pin Diameter	0.012" (0.31mm)
Receiving PCB Hole Diameter	0.020"/0.025" (0.51mm/0.64mm)
PCB Thickness	0.096" min. (2.44mm)



LaMieux Products, Ltd.

4F-4, No.79, Sec1
Hsin Tai Wu Road,
Hsi-Chih Dist.,
New Taipei City,
Taiwan

TEL: +886-2-2698-1766
FAX: +886-2-2698-1755

lamieux@ms45.hinet.net
www.lamieux.com.tw



Snap-In and Standard Fuse Clips

Features and Benefits

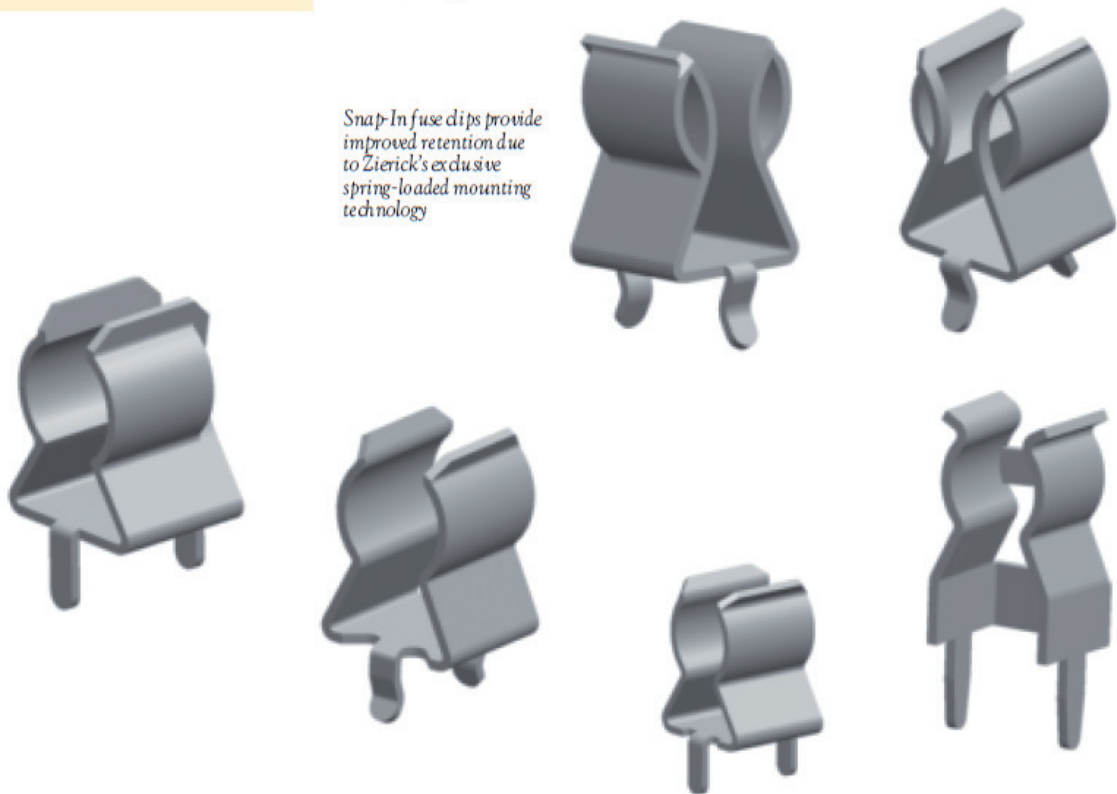
- Zierick's Snap-In fuse clips ensure reliable mounting through the incorporation of a spring-loaded mounting leg.
- Snap-In terminals will withstand side loading and rough PCB handling.
- The Snap-In feature is especially useful with manually inserted and robotic assembly applications where an extremely low terminal mounting force is required.
- Both Snap-In and standard fuse clips are available for 1/4" (6.35mm) and 0.197" (5mm) cylindrical fuse sizes.



Zierick's exclusive Snap-In PCB fuse mounting technology features a spring-loaded mounting leg which enhances PCB quality and reliability. When inserted in a PCB, Snap-In terminals exhibit

increased retention, strength, and durability. Snap-In and standard fuse clips are available in loose piece format, with or without integral fuse stops.

Snap-In fuse clips provide improved retention due to Zierick's exclusive spring-loaded mounting technology



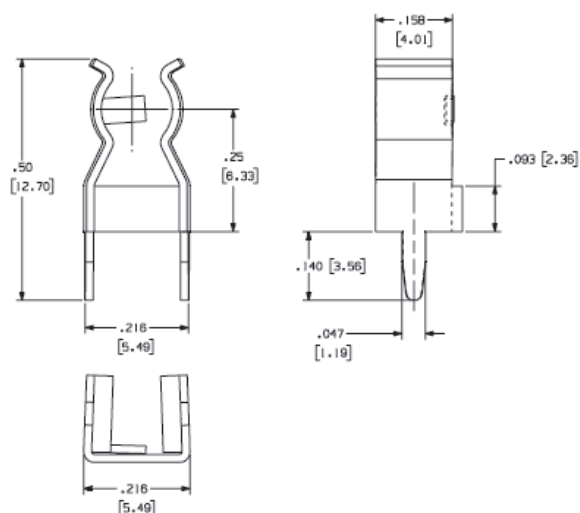
LaMieux Products, Ltd.

4F-4, No.79, Sec1
Hsin Tai Wu Road,
Hsi-Chih Dist.,
New Taipei City,
Taiwan

TEL: +886-2-2698-1766
FAX: +886-2-2698-1755

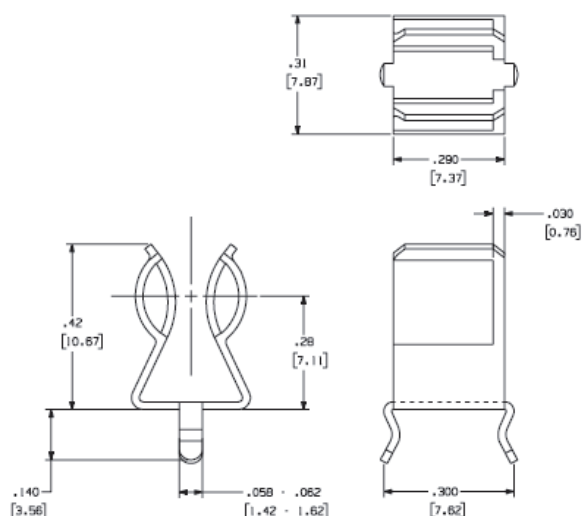
lamieux@ms45.hinet.net
www.lamieux.com.tw





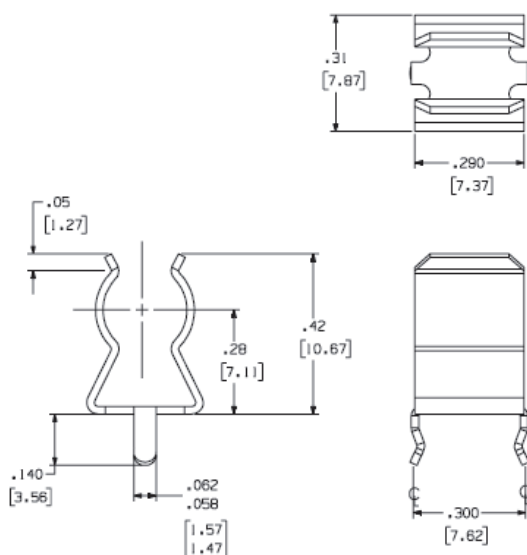
Part Number 990

Loose Part No.	990
Fuse Size	0.197" (5mm)
Fuse Receptacle Type	With Fuse Stop
Material Thickness / Type	0.016" (0.41mm) Brass
Standard Finish	100% Tin over Copper
Mounting Hole Diameter	0.052" (1.32mm)
Current Rating	15 Amperes



Part Number 1047

Loose Part No.	1047
Fuse Size	1/4" (6.35mm)
Fuse Receptacle Type	With Fuse Stop
Material Thickness / Type	0.020" (0.51mm) Brass
Standard Finish	100% Tin over Copper
Current Rating	15 Amperes
Mounting Hole Diameter	0.067" (1.70mm)



Part Number 1048

Loose Part No.	1048
Fuse Size	1/4" (6.35mm)
Fuse Receptacle Type	Without Fuse Stop
Material Thickness / Type	0.020" (0.51mm) Brass
Standard Finish	100% Tin over Copper
Current Rating	15 Amperes
Mounting Hole Diameter	0.067" (1.70mm)

LaMieux Products, Ltd.

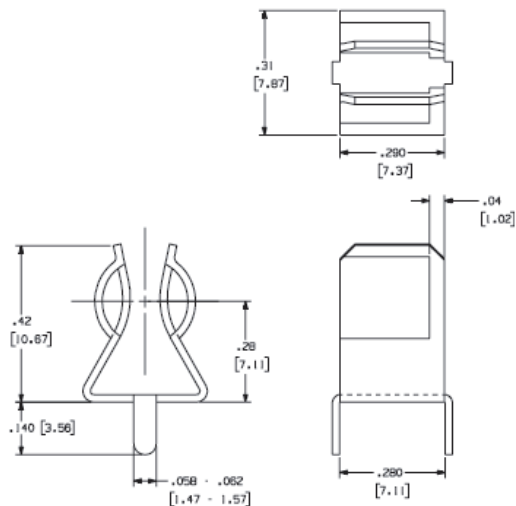
4F-4, No.79, Sec1
Hsin Tai Wu Road,
Hsi-Chih Dist.,
New Taipei City,
Taiwan

TEL: +886-2-2698-1766
FAX: +886-2-2698-1755

lamieux@ms45.hinet.net
www.lamieux.com.tw

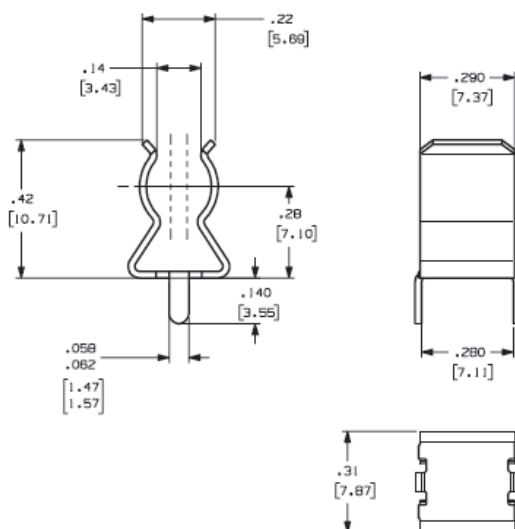


Fuse Clip Receptacles



Part Number 926

Loose Part No.	926
Fuse Size	1/4" (6.35mm)
Fuse Receptacle Type	With Fuse Stop
Material Thickness / Type	0.020" (0.51mm) Brass
Standard Finish	100% Tin over Copper
Mounting Hole Diameter	0.067" (1.70mm)
Current Rating	15 Amperes



Part Number 927

Loose Part No.	927
Fuse Size	1/4" (6.35mm)
Fuse Receptacle Type	Without Fuse Stop
Material Thickness / Type	0.020" (0.51mm) Brass
Standard Finish	100% Tin over Copper
Mounting Hole Diameter	0.067" (1.70mm)
Current Rating	15 Amperes



Snap-In fuse clips provide improved retention due to Zierick's exclusive spring-loaded mounting technology



LaMieux Products, Ltd.

4F-4, No.79, Sec1
Hsin Tai Wu Road,
Hsi-Chih Dist.,
New Taipei City,
Taiwan

TEL: +886-2-2698-1766
FAX: +886-2-2698-1755

lamieux@ms45.hinet.net
www.lamieux.com.tw



IDC Wire Insertion Tools

Manual and Semi-Automatic IDC Wire Insertion Tools

Zierick offers a variety of wire insertion tools for wire-to-IDC connections. These include wire insertion hand tools for limited volume applications, and pneumatic hand tools for faster and easier connections for higher volumes.

The "XXXX" in the names of the Tools stands for the part numbers they are inserting.



WTCP-XXXX



WTW-XXXX



WTPPS-XXXX



WTP-4ALL



WTPPL-XXXX

LaMieux Products, Ltd.

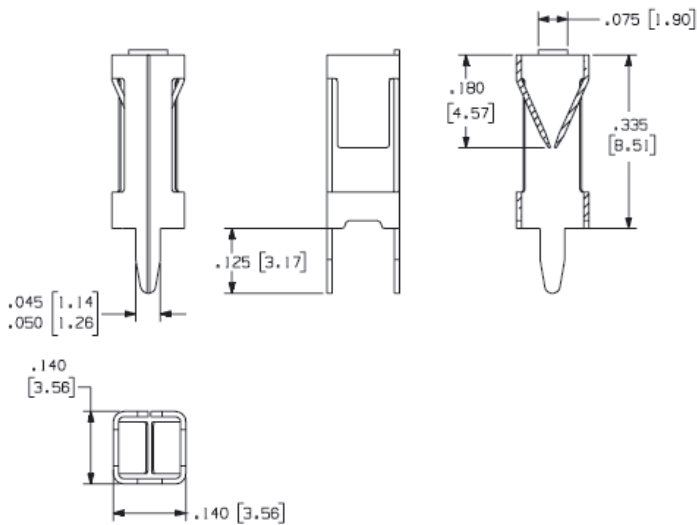
4F-4, No.79, Sec1
Hsin Tai Wu Road,
Hsi-Chih Dist.,
New Taipei City,
Taiwan

TEL: +886-2-2698-1766
FAX: +886-2-2698-1755

lamieux@ms45.hinet.net
www.lamieux.com.tw

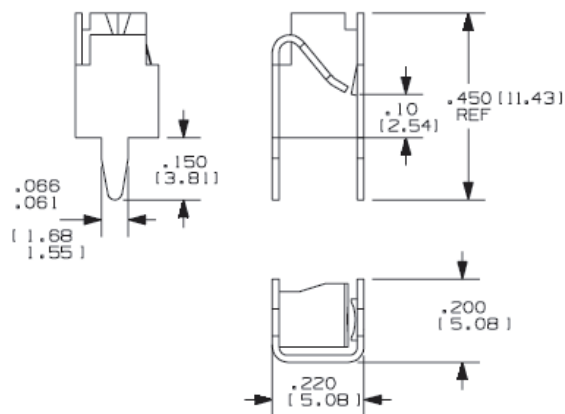


Part Numbers 1187, 6187



Loose Part No.	1187
Reeled Part No.	6187
Mating Wire Size	#20-#14 AWG
Mounting Type	Outward Splay
Material Thickness / Type	0.010" (0.25mm) Phosphor Bronze
Standard Finish	Loose: 100% Tin over Copper Reeled: 100% Tin over Copper
Mating Type	Vertical
Mating Entry	Top
Mounting Hole Diameter	2 holes 0.050" ± 0.003 " (3.81mm ± 0.076 mm) on 0.130" ± 0.003 " (3.302mm ± 0.076 mm) centers
Current Rating	10 Amperes
Resistance Rating	10mOhm Max
Temperature Rating	-65° to 105°C
Insertion Force-Max.	Application Dependent / Submit Mating Terminal Sample to Factory
Withdrawal Force-Max.	Application Dependent / Submit Mating Terminal Sample to Factory
Applicator System	Loose: Consult factory Reeled: Model 9700, 9700 XY

Part Numbers 1176, 6176



Loose Part No.	1176
Reeled Part No.	6176
Mating Wire Size	#14-#16 AWG
Mounting Type	Outward Splay
Material Thickness / Type	0.016" (0.41mm) C26000 Brass
Standard Finish	Loose: 100% Tin over Copper Reeled: 100% Tin over Copper
Mating Type	Vertical
Mating Entry	Top
Mounting Hole Diameter	2 holes 0.072" ± 0.003 " (1.83mm ± 0.076 mm) on 0.200" ± 0.003 " (5.08mm ± 0.076 mm) centers
Current Rating	10 Amperes
Resistance Rating	10mOhm Max
Temperature Rating	-65° to 75°C
Insertion Force-Max.	Application Dependent / Submit Mating Terminal Sample to Factory
Withdrawal Force-Max.	Application Dependent / Submit Mating Terminal Sample to Factory
Applicator System	Loose: Consult factory Reeled: Model 9700, 9700 XY

LaMieux Products, Ltd.

4F-4, No.79, Sec1
Hsin Tai Wu Road,
Hsi-Chih Dist.,
New Taipei City,
Taiwan

TEL: +886-2-2698-1766
FAX: +886-2-2698-1755

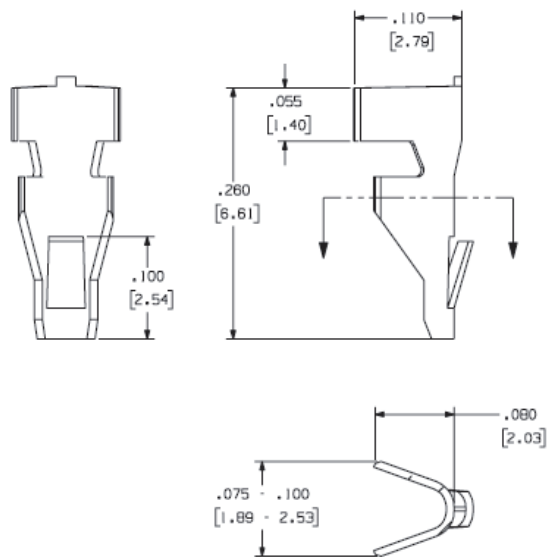
lamieux@ms45.hinet.net
www.lamieux.com.tw



Crimp-On Lead Wire Strain Relief Terminals

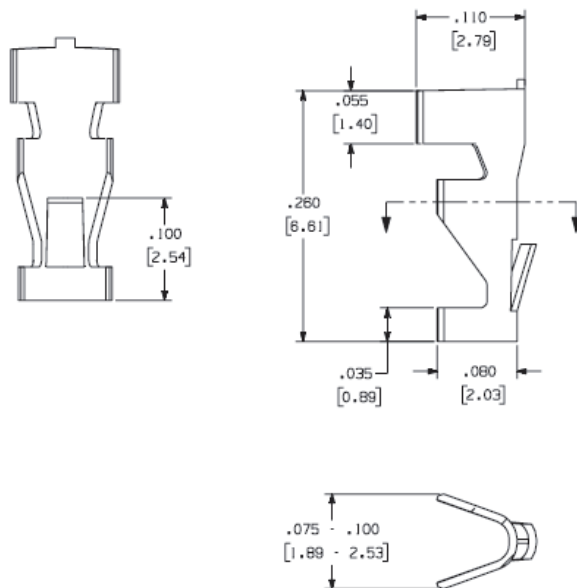
Part Number 5044

Loose Part No.	5044
Material Thickness / Type	.020 C26000 Brass
Finish Code	Pre-Finished 100% Hot Tin Dip (consult factory for thickness). Material edges will be bare.
Wire Range	22-18 AWG
Mounting Hole Diameter	0.073" (1.85mm)
Applicator System	Model 4000



Part Number 5088

Loose Part No.	5088
Material Thickness / Type	.020 C26000 Brass
Finish Code	Pre-Finished 100% Hot Tin Dip (consult factory for thickness). Material edges will be bare.
Wire Range	22-18 AWG
Mounting Hole Diameter	0.073" (1.85mm)
Applicator System	Model 4000



LaMieux Products, Ltd.

4F-4, No.79, Sec1
Hsin Tai Wu Road,
Hsi-Chih Dist.,
New Taipei City,
Taiwan

TEL: +886-2-2698-1766
FAX: +886-2-2698-1755

lamieux@ms45.hinet.net
www.lamieux.com.tw

