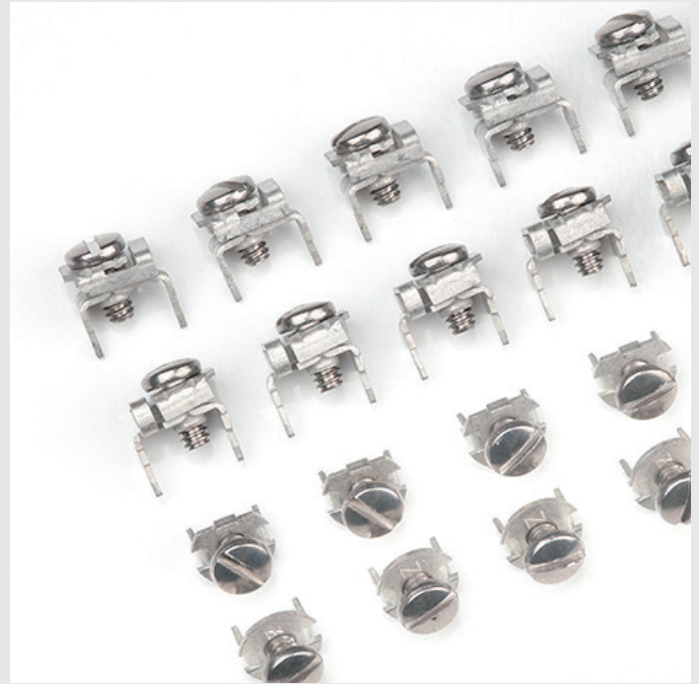


# THR/THD Screws



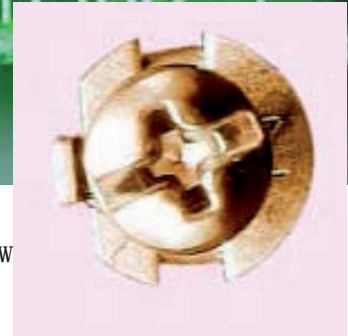
## Features and Benefits

- Zierick screw terminals allow reliable attachment of discrete lead wires to printed circuit boards.
- They are an alternative to expensive PCB mountable terminal strips and barrier blocks.
- Our screw terminals provide a solid gas-tight connection with improved vibration resistance and minimal long-term stress relaxation.
- They are available in seven basic configurations, and are acceptable for most common wire gauges.
- Available with or without screws, they can be staked or unstaked, turned-down or backed-out.
- They may be ordered in a variety of thread and screw sizes, in addition to our Combination Head Screw.
- They are assembled with solder-resistant 100% stainless steel screws or custom screws if required.
- They are plated with tin overplate and copper underplate for improved solderability.
- Zierick's new Combination Head Screw allows the use of either slot or Phillips head screwdrivers. It is currently available for PN 934 ST.SC. Consult the factory for information on availability of this product.





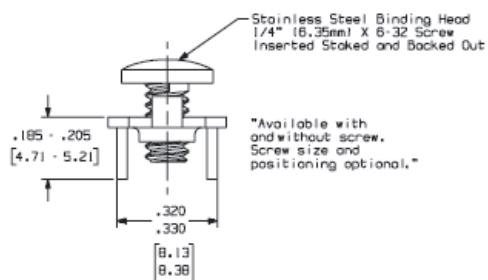
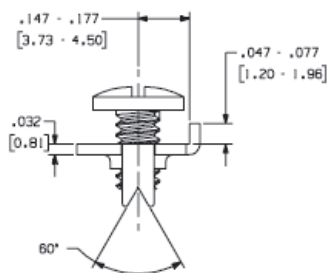
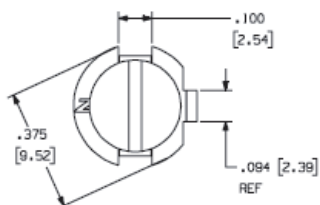
Combination Head Screw  
Part Number 934 ST.SC



### Part Numbers 731, 934 ST.S, 934 ST.SC

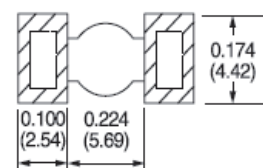
Loose Part No.	731	934 ST.S	934 ST.SC
Material Thickness / Type	0.032" (0.81mm) Brass		
Standard Finish	100% Tin over Copper		
Screw Type	No Screw	Stainless Steel Binding Head 1/4" (6.35) x 6-32	
Screw Position	No Screw	Inserted, Staked & Backed out	
Current Rating	30 Amperes		

ST.S stands for Stainless Steel Screw. ST.SC stands for Stainless Steel Screw with a Combination Head which can be turned with either a slot head or Phillips screwdriver.



### Recommended Pad Geometry

(Underside of PCB)



LaMieux Products, Ltd.

4F-4, No.79, Sec1  
Hsin Tai Wu Road,  
Hsi-Chih Dist.,  
New Taipei City,  
Taiwan

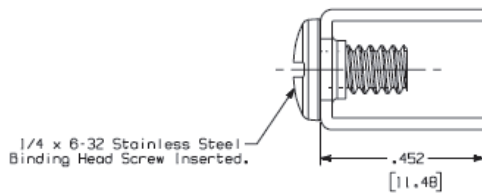
TEL: +886-2-2698-1766  
FAX: +886-2-2698-1755

lamieux@ms45.hinet.net  
www.lamieux.com.tw

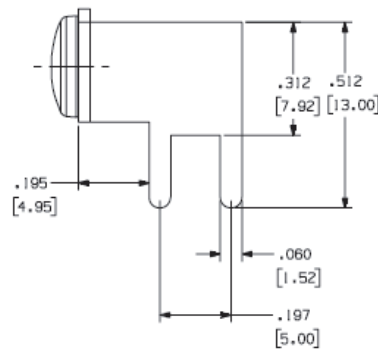
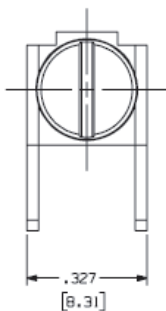


## Screw Terminals / Binding Posts

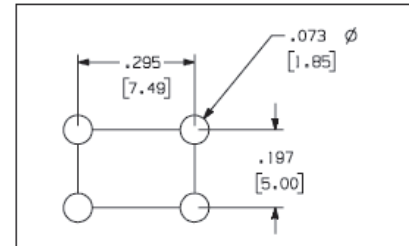
### Part Numbers 1117 ST.S, 1117, 1116 ST.S, 1202



Loose Part No.	1117 ST.S	1117	1116 ST.S	1202
Material Thickness / Type	0.032" (0.81mm) C26000 Brass			
Standard Finish	Pre-Tinned Brass			
Screw Type	Stainless Steel Binding Head 1/4" (6.35mm) x 6-32	No Screw	Stainless Steel Binding Head 1/4" (6.35mm) x 6-32	Stainless Steel Binding Head 1/4" (6.35mm) x 6-32
Screw Position	Inserted & Down	N/A	Inserted & Down	Inserted, Staked & Backed Out
Wire Stop	No		Yes	
Current Rating	30 Amperes			

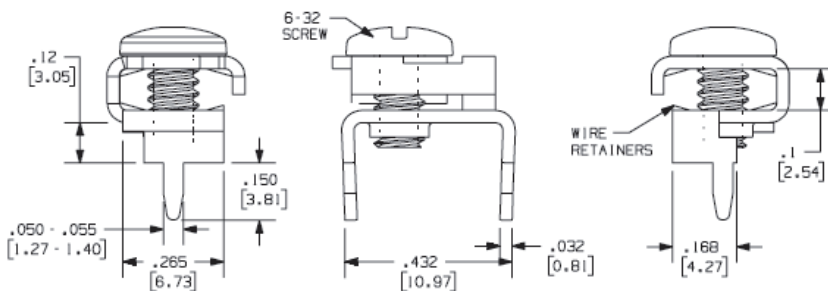
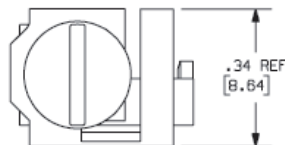


Typical PCB Mounting Hole Configuration

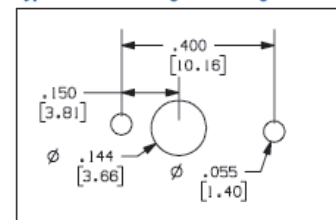


### Part Number 1030

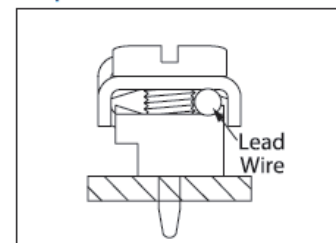
Loose Part No.	1030
Material Thickness / Type	0.032" (0.81mm) Brass
Screw Type	Stainless Steel Binding Head 5/16" (7.92mm) x 6-32
Screw Position	Down until just touching surface of part
Standard Finish	100% Tin over Copper
Current Rating	30 Amperes



Typical PCB Mounting Hole Configuration



Clamp Down Condition



LaMieux Products, Ltd.

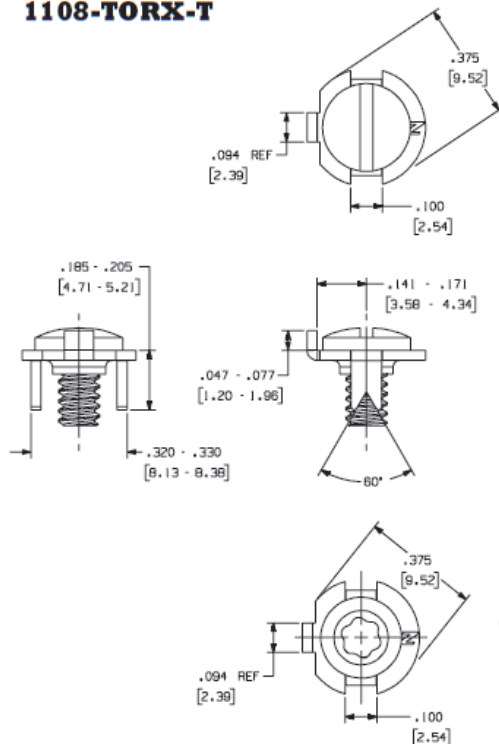
4F-4, No.79, Sec1  
Hsin Tai Wu Road,  
Hsi-Chih Dist.,  
New Taipei City,  
Taiwan

TEL: +886-2-2698-1766  
FAX: +886-2-2698-1755

lamieux@ms45.hinet.net  
www.lamieux.com.tw



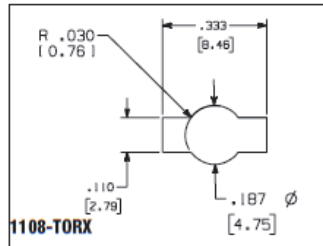
## Part Numbers 1108, 1108-GRSC, 1108-TORX, 1108-TORX-T



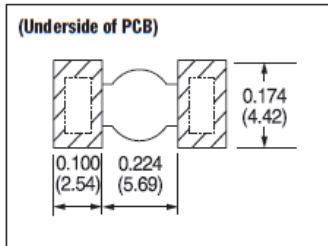
Loose Part No.	1108	1108-GRSC	1108-TORX	1108-TORX-T
Material Thickness / Type	0.032" (0.81mm) Brass			
Standard Finish	Matte Tin			
Screw Type	Stainless Steel Binding Head 1/4" (6.35mm) X 6-32		1/4" (6.35mm) x 6-32 Torx Head Screw	
Screw Position	Inserted, Staked and Down			
Current Rating	30 Amperes			

GRSC is a green screw which indicates it is a grounding screw, and TORX is a screw which requires a Torx screwdriver to be turned.

### Typical PCB Mounting Configuration



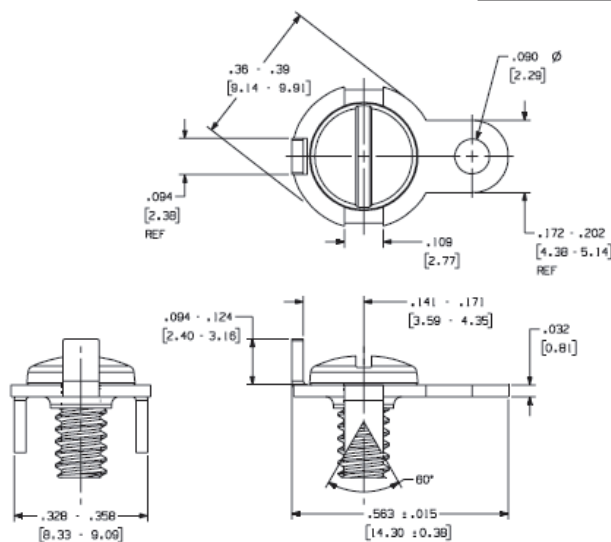
### Recommended Pad Geometry



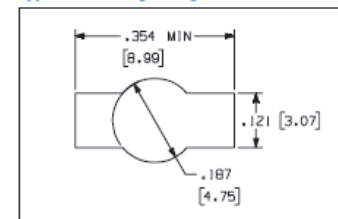
\*Available with and without screw.  
Screw size and positioning optional.\*

## Part Numbers 792, 348

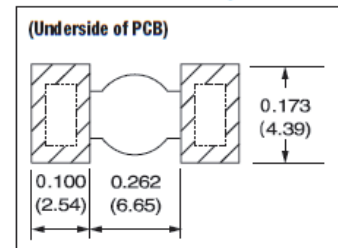
Loose Part No.	792	348
Material Thickness Type	0.032" (0.81mm) Brass	
Standard Finish	100% Tin over Copper	
Screw Type	No Screw	Tin Plated Brass Binding Head 5/16" (7.94mm) x 6-32
Screw Position	No Screw	Down, No Stake
Current Rating	30 Amperes	



### Typical Mounting Configuration



### Recommended Pad Geometry



LaMieux Products, Ltd.

4F-4, No.79, Sec1  
Hsin Tai Wu Road,  
Hsi-Chih Dist.,  
New Taipei City,  
Taiwan

TEL: +886-2-2698-1766  
FAX: +886-2-2698-1755

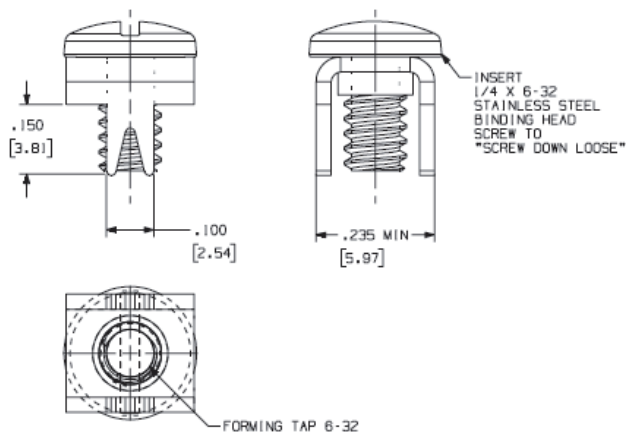
lamieux@ms45.hinet.net  
www.lamieux.com.tw



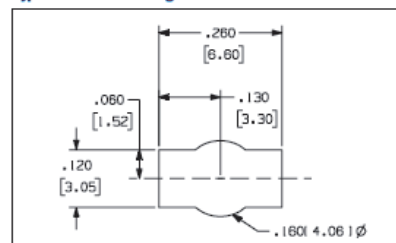
## Screw Terminals / Binding Posts

### Part Number 1158 ST.S

Loose Part No.	1158 ST.S
Material Thickness Type	0.032" (0.81mm) Brass
Standard Finish	100% Tin over Copper
Screw Type	Stainless Steel Binding Head 0.250" (6.35mm) x 6-32
Screw Position	Down, No Stake
Current Rating	30 Amperes

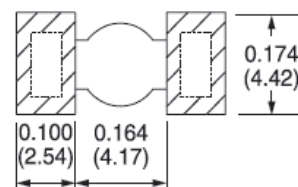


#### Typical PCB Mounting Detail



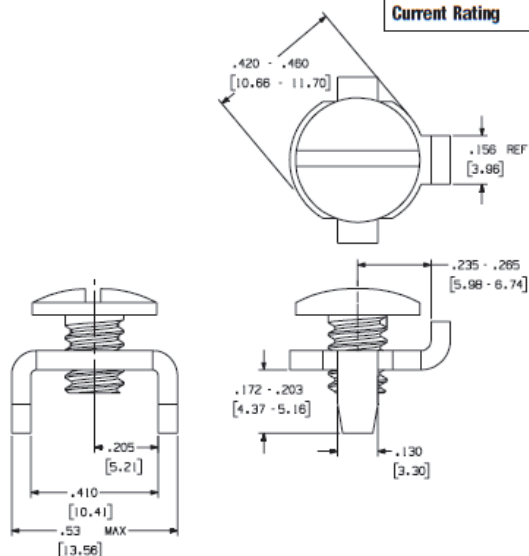
#### Recommended Pad Geometry

##### (Underside of PCB)

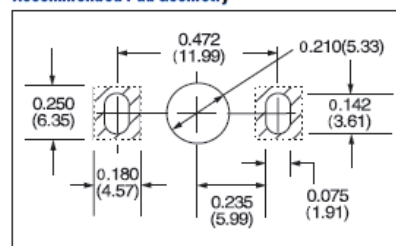


### Part Numbers 928, 928-No Screw, 928-No Stake

Loose Part No.	928	928-No Screw	928-No Stake
Material Thickness / Type	0.062" (1.57mm) Brass		
Standard Finish	100% Tin over Copper		
Screw Type	Stainless Steel Binding Head 1/4" (6.35mm) x 10-32	No Screw	Stainless Steel Binding Head 1/4" (6.35mm) x 10-32
Screw Position	Inserted, Staked and Backed-Out	No Screw	Inserted and Down
Current Rating	30 Amperes		



#### Typical PCB Mounting Configuration and Recommended Pad Geometry



LaMieux Products, Ltd.

4F-4, No.79, Sec1  
Hsin Tai Wu Road,  
Hsi-Chih Dist.,  
New Taipei City,  
Taiwan

TEL: +886-2-2698-1766  
FAX: +886-2-2698-1755

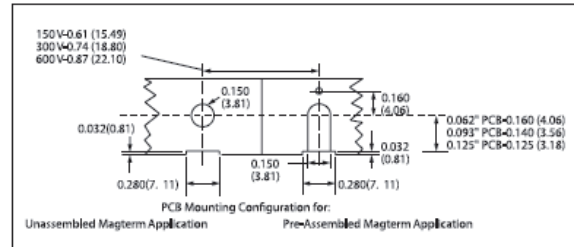
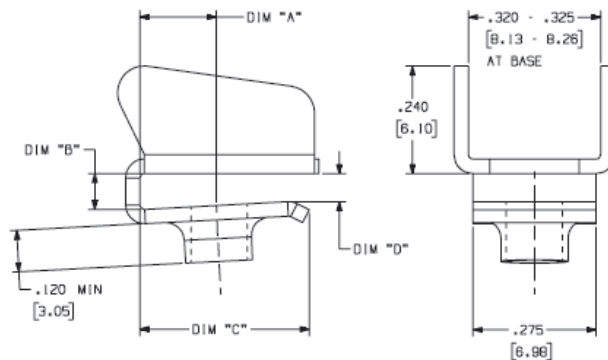
lamieux@ms45.hinet.net  
www.lamieux.com.tw



## Part Numbers M6111, M6112

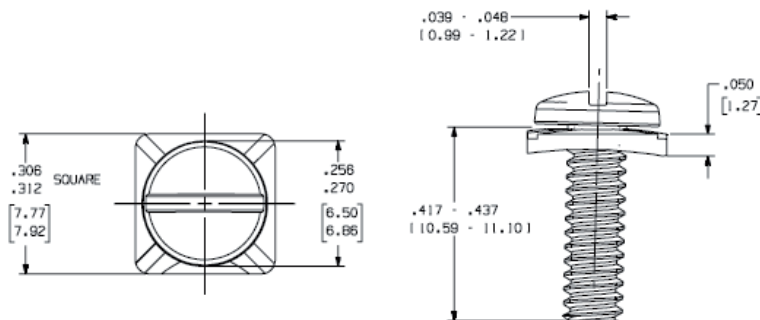
Loose Part No.	M6111	M6112
Material Thickness / Type	0.032" (0.81mm) Brass	
Standard Finish	100% Matte Tin	
Screw Specifications	No Screw	
Current Rating	30 Amperes	
Dim 'A'	0.160" (4.06mm)	0.145" (3.68mm)
Dim 'B'	0.070"/0.075" (1.78mm/1.91mm)	0.102"/0.107" (2.59mm/2.72mm)
Dim 'C'	0.380" (9.65mm)	0.365" (9.27mm)
Dim 'D'	0.048"/0.058" (1.22mm/1.47mm)	0.081"/0.091" (2.06mm/2.31mm)

### Typical PCB Mounting Configuration



## Part Number 7/16 SEMS SCREW

Loose Part No.	7/16 SEMS SCREW
Material Type	Steel
Standard Finish	Zinc
Current Rating	30 Amperes

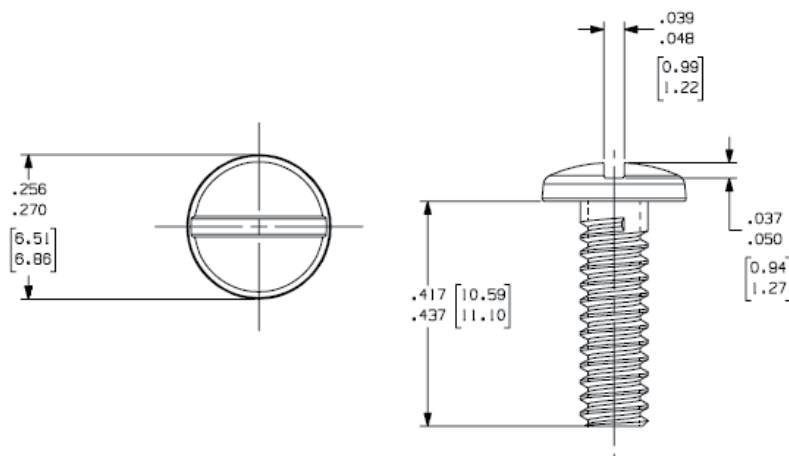




## Screws & Wire Clamps

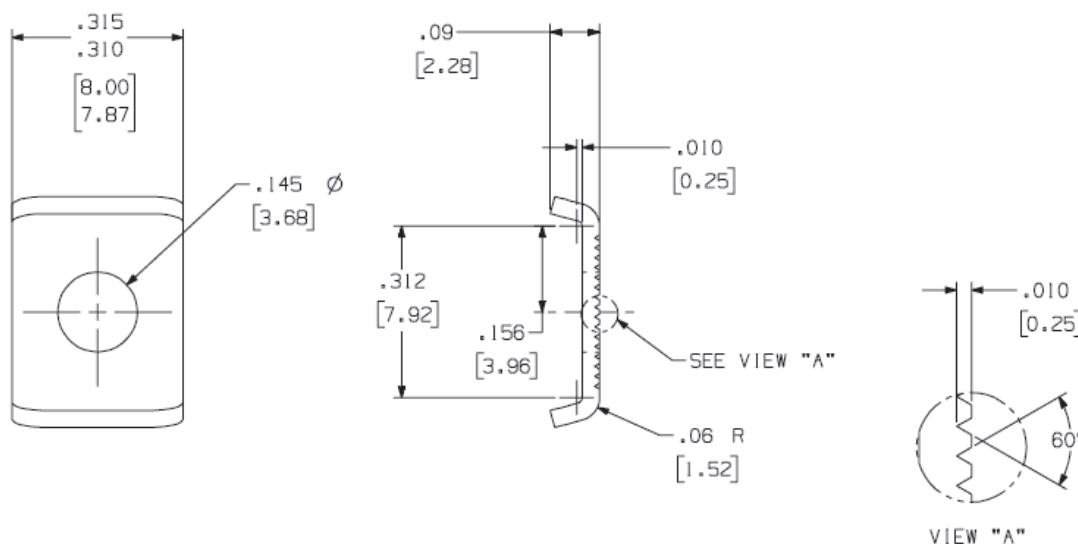
### Part Number 7/16 632 BET SCREW

Loose Part No.	7/16 632 BET SCREW
Material Type	Brass
Standard Finish	100% Matte Tin
Current Rating	30 Amperes



### Part Number CPB 9030

Loose Part No.	CPB 9030
Material Type	Brass
Standard Finish	100% Matte Tin
Current Rating	30 Amperes



LaMieux Products, Ltd.

4F-4, No.79, Sec1  
Hsin Tai Wu Road,  
Hsi-Chih Dist.,  
New Taipei City,  
Taiwan

TEL: +886-2-2698-1766  
FAX: +886-2-2698-1755

lamieux@ms45.hinet.net  
www.lamieux.com.tw

